

# How to develop your PLN

A Personal Learning Network can help enhance your professional practice and put you in touch with cutting edge information and resources. Sound interesting? Here's a simple guide to getting started.

## 1. Consider your professional goals and interests

*Your PLN is all about your own professional learning, so take some time to consider what you would like to learn more about*



## 2. Create a Twitter account

Twitter is the easiest place to begin making connections. Start by searching using a hashtag for topics that interest you, e.g. #inquirylearning or #creativity.

If you aren't sure, check out a general hashtag such as #edchat and see who is saying what.



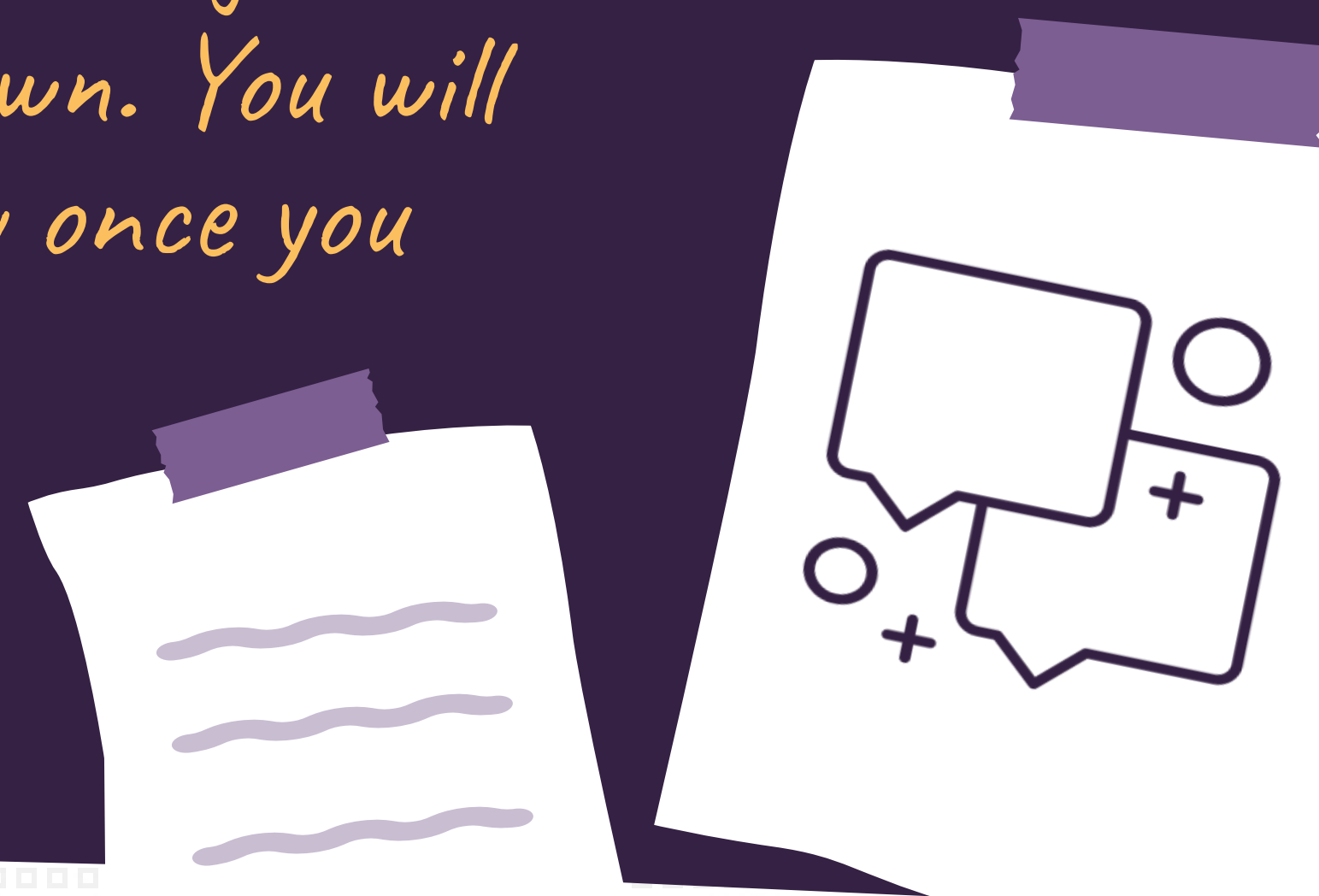
## 3. Build a space of your own

A blog is a space that you own. You don't need to post regularly, but this space can become your hub, and it will grow as your PLN grows.



## 4. Begin interacting

A personal learning network is more than just following others. When you feel comfortable, begin interacting. Take small steps first. Liking or sharing others' posts is a good first step. Then try sharing something of your own. You will be surprised at how your network begins to grow once you begin taking an active part.



**Want to know more?  
Check this three part series on  
how to supercharge your PLN**

Read more: <http://www.linkinglearning.com.au/supercharge-your-pln-1/>